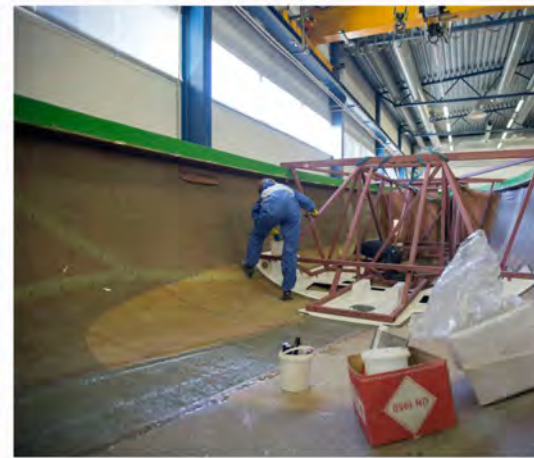


delta
POWERBOATS



FLEET



DELTA | Craftsmanship

Delta Powerboats is a Swedish brand that integrates strong Scandinavian design concepts with unparalleled craftsmanship and the finest select materials to create unique luxury yachts for the discerning few. Delta remains the first and only serial manufacturer in the world to offer all carbon fiber motoryachts. Carbon fiber is a strong and light material used for the most high-end and luxurious race and road cars, jets, and other high performance applications. Delta's manufacturing expertise results in yachts 30-50% lighter than competitor's models and offers attractive fuel consumption. Delta Powerboats are crafted semi-custom, with each Owner's unique requirements in mind.

Since 2003, the Delta brand has been Scandinavia's fastest growing boat brand due to the high level of design, craftsmanship, reliability, seakeeping, comfort, aftersale support, and manifold other reasons. Now, the rest of the world has the opportunity to enjoy the same incredible attention to detail, luxury, adventure, and world-class ownership experience. Welcome to the world of Delta Powerboats. Join us.



26 OPEN



delta

POWERBOATS

26 OPEN

SPECIFICATIONS:

Main Characteristics

LOA: 26.6 ft.
 Waterline Length: 26 ft.
 Beam: 8.5 ft.
 Draft: 2.4 ft.

Displacements: 4,400 lbs dry
 5,500 lbs wet
 [*4,900 lbs in carbon]
 6,600 lbs max

Fuel Capacity: 53 US gal
 Fresh Water Capacity: 16 US gal
 Holding Tank Capacity: 10.5 US gal

Top Speed: 50+ knots
 [Volvo Penta GXI-380]
 Cruise Speed: 40+ knots
 [Volvo Penta GXI-380]

CE Class: C
 Design: Ted Mannerfelt

Hull: High Performance twin-stepped ventilated deep-v

Construction: Vacuum-infused "Diab Core" composite of glass + vinylester + divinycell

Engine Options: 1x GXI-380 w/ DuoProp
 1x GXI-320 w/ DuoProp
 1x D3-220 w/ DuoProp

Galley:

1x 1-Zone cooktop
 1x Custom sink
 1x Custom SS refrigerator
 1x Set of built-in dishware & flatware

Owner's Cabin:

Oiled teak floors
 1x 20cm thick mattress w/ Sunbrella interior cover
 2x Bose satellite speakers
 Miscellaneous storage & drawers

Head:

1x Marine Toilet
 1x Countertop w/ sink, faucet, and cubbies
 1x 110 V outlet
 1x Door-mounted mirror
 Miscellaneous storage & drawers

Stereo System: (various options available)

4x Bose waterproof speakers (typical)



FOR MORE INFORMATION ABOUT THE 26 OPEN OR ANY OF THE DELTA POWERBOATS LINE, PLEASE CONTACT YOUR LOCAL FACTORY REPRESENTATIVE.

BY EMAIL:
 SALES@DELTAPOWERBOATS.US

BY PHONE:
 305.439.5803 [CHAPMAN]
 772.532.3598 [IAN]

VISIT US ONLINE
 WWW.DELTACARBONYACHTS.COM

33 OPEN



delta

POWERBOATS

33OPEN

SPECIFICATIONS:

Main characteristics

LOA:
Waterline Length:
Beam:
Draft:
Bridge Clearance:

Vetus (w/inline)
Extraction 35.5 ft.
4m³/min 141CFM 33 ft.
Ø76mm 10.2 ft.
Motor is igniter protected 3.1 ft.
7.8 ft.

Displacements:

8,379 lbs (Dry)
10,582 lbs (Typical)
13,228 lbs (Max)

Fuel Capacity:
Fresh Water Capacity:
Holding Tank Capacity:

145.3 US gal
52.8 US gal
13.2 US gal

Top Speed:

41-43 knots

Cruise Speed:

[Volvo Penta D6-400]
35 knots
[Volvo Penta D6-400]

CE Class:
Design:

C
Ted Mannerfelt

Hull:

Al Vent hose
High Performance
twin-stepped ventilated
deep-v

Construction:

Vacuum-infused "Diab Core"
composite of glass
vinylester / divynycell

Engine Options:

1x D6-400 w/ DuoProp
2x D3-220 w/ DuoProp
2x GXI-380 w/ DuoProp

Galley:

1x 2-Zone cooktop
1x Custom double-sink
1x Custom SS Fridge with integrated
freezer
1x Trash compartment w/ removable can
1x Set of built-in dishware & flatware

Owner's Cabin:

Oiled teak floors
1x 20cm thick mattress w/ Sunbrella
interior cover
2x Bose satellite speakers
Miscellaneous storage & drawers

Owner's Head:

1x Toilet
1x Stand-up shower
1x Sink & counter space
1x 110 V outlets
1x Mounted wall mirror w/
integrated lighting
Miscellaneous storage & drawers

Aft Guest Cabin:

1x 20cm thick mattress
2x Outlets & USBs
2x Bedside lights
Miscellaneous storage & drawers

Stereo System: (various options available)
4x Bose waterproof speakers [typical]



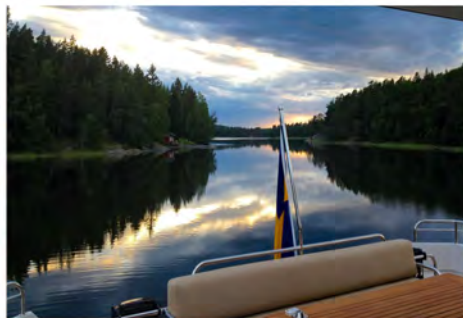
FOR MORE INFORMATION ABOUT THE 33 OPEN OR ANY OF THE DELTA POWERBOATS LINE,
PLEASE CONTACT YOUR LOCAL FACTORY REPRESENTATIVE.

BY EMAIL:
SALES@DELTAPOWERBOATS.US

BY PHONE:
305.439.5803 [CHAPMAN]
772.532.3598 [IAN]

VISIT US ONLINE
WWW.DELTACARBONYACHTS.COM

400



delta

POWERBOATS

400

SPECIFICATIONS:

Main characteristics

LOA: 42.0 ft.
 Waterline Length: 39.7 ft.
 Beam: 11.8 ft.
 Displacements: 15,432 # [Typical]
 Fuel Capacity: 211 US gal
 Top Speed: 46 knots
 Cruise Speed: 28-40 knots
 CE Class: C
 Design: Ted Mannerfelt
 Hull: High-Performance Twin-Stepped Ventilated Deep-V
 Construction: Vacuum-infused "Diab Core" composite of glass vinylester / divinycell
 Engine Options: 2x D4-300 w/ DuoProp
 Custom Order: SeaKeeper Gyro Stabilizer
 Additional Fuel Capacity

Galley:

1x 2-Zone Cooktop
 1x Custom Double-Sink
 1x Custom SS Fridge W/ Integrated Freezer
 1x Trash Compartment W/ Removable Can
 1x Set Of Built-In Dishware & Flatware

Owner's Cabin:

Oiled Teak Floors
 1x 20cm Thick Mattress W/ Sunbrella Interior Cover
 2x Bose Satellite Speakers
 Miscellaneous Storage & Drawers

Owner's Head:

1x Toilet
 1x Stand-Up Shower
 1x Sink & Counter Space
 1x 110 V Outlets
 1x Mounted Wall Mirror W/ Integrated Lights
 Miscellaneous Storage & Drawers

Guest Cabins (1 or 2):

1x 20cm Thick Mattress
 2x Outlets & Usbs
 2x Bedside Lights
 Miscellaneous Storage & Drawers

Stereo System: (Various Options Available)
 4x Bose Waterproof Speakers [Typical]

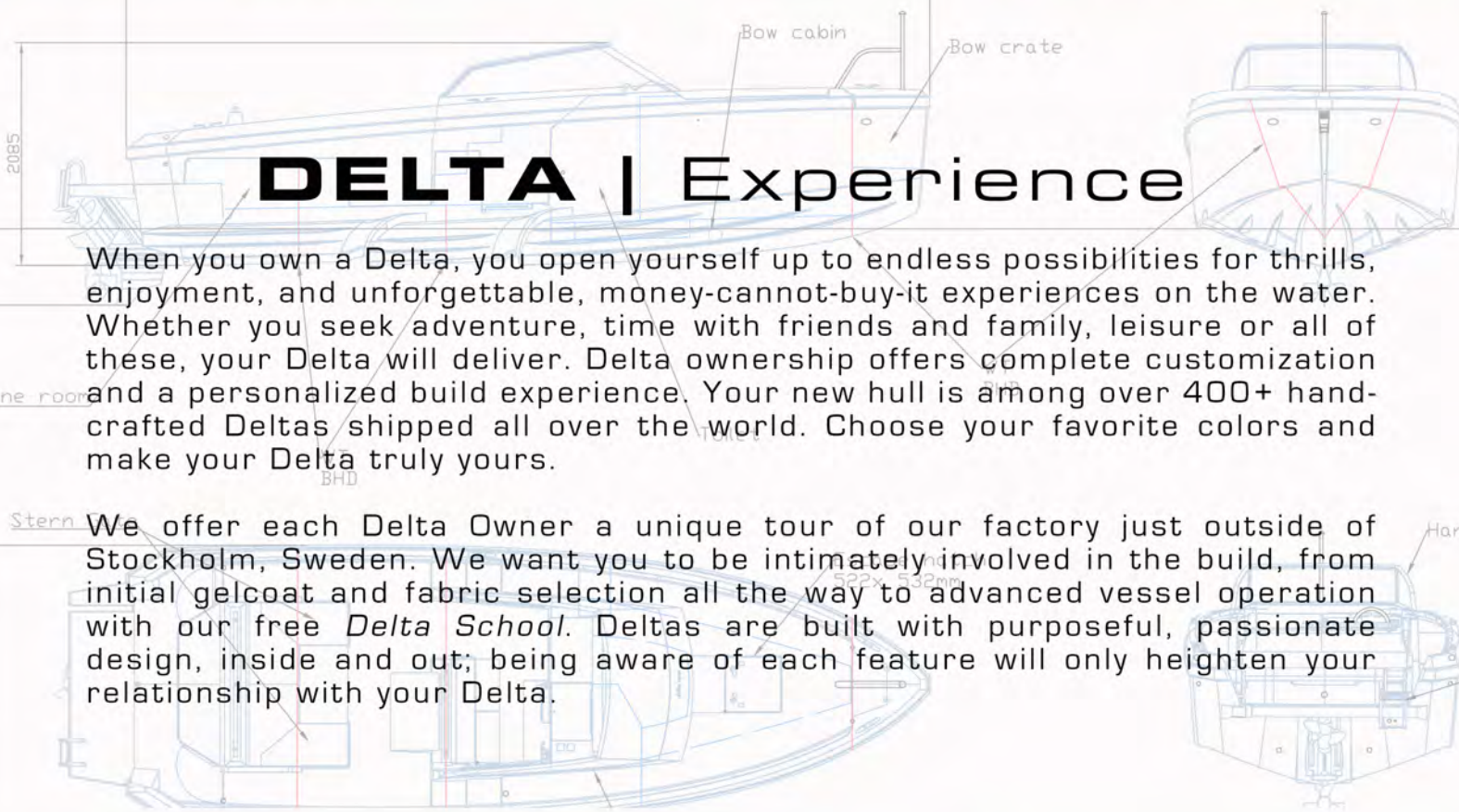


FOR MORE INFORMATION ABOUT THE 40 SW/WA OR ANY OF THE DELTA POWERBOATS LINE, PLEASE CONTACT YOUR LOCAL FACTORY REPRESENTATIVE.

BY EMAIL:
 SALES@DELTAPOWERBOATS.US

BY PHONE:
 305.439.5803 [CHAPMAN]
 772.532.3598 [IAN]

VISIT US ONLINE
 WWW.DELTACARBONYACHTS.COM



DELTA | Experience

When you own a Delta, you open yourself up to endless possibilities for thrills, enjoyment, and unforgettable, money-cannot-buy-it experiences on the water. Whether you seek adventure, time with friends and family, leisure or all of these, your Delta will deliver. Delta ownership offers complete customization and a personalized build experience. Your new hull is among over 400+ hand-crafted Deltas shipped all over the world. Choose your favorite colors and make your Delta truly yours.

We offer each Delta Owner a unique tour of our factory just outside of Stockholm, Sweden. We want you to be intimately involved in the build, from initial gelcoat and fabric selection all the way to advanced vessel operation with our free *Delta School*. Deltas are built with purposeful, passionate design, inside and out; being aware of each feature will only heighten your relationship with your Delta.



CARBON Series



54 CARBON



delta

POWERBOATS

54 CARBON

SPECIFICATIONS:

Main characteristics

LOA: 59.4 ft.
 Hull Length: 54.5 ft.
 Beam: 15.1 ft.
 Draft: 4.6 ft.
 Clearance: 20.3 ft.

Displacements: 30,800 lbs wet
 28,000 lbs dry
 44,000 lbs total capacity

Fuel Capacity: 740 US gal
 Fresh Water Capacity: 185 US gal
 Holding Tank Capacity: 2 x 53 US gal

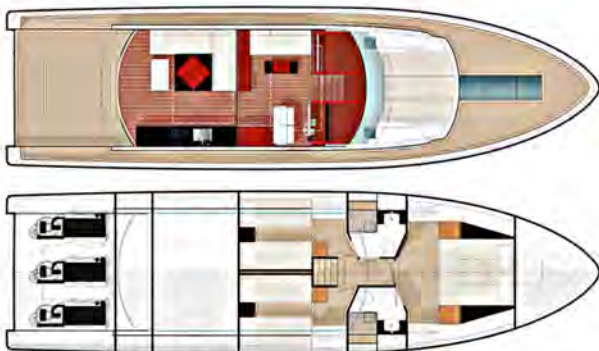
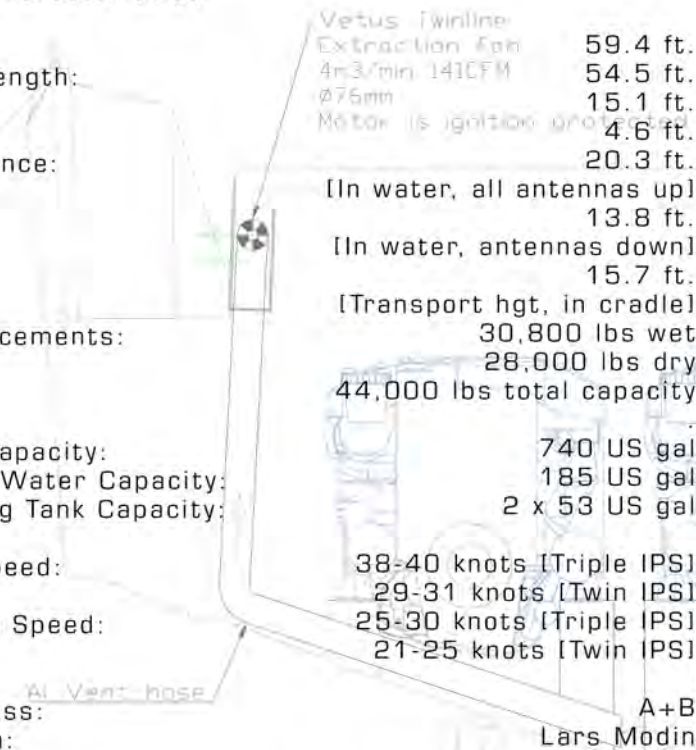
Top Speed: 38-40 knots [Triple IPS]
 29-31 knots [Twin IPS]
 Cruise Speed: 25-30 knots [Triple IPS]
 21-25 knots [Twin IPS]

CE Class: A+B
 Design: Lars Modin

Construction: Hull, Superstructure, Interior:
 Vacuum-Infused Carbon Fiber + Divinycell
 Electrical MasterVolt/ Luksusjaht

Manufacturer: Luksusjaht AS

Powerplants: 3 x Volvo Penta IPS 600
 (435 HP each, 1305 HP total)
 2 x Volvo Penta IPS 600



Galley:

- 1 x Siemens cooktop
- 1 x Siemens "Speed Oven"
- 1 x Siemens dish washer
- 1 x SS double sink
- 1 x Kitchen faucet by Vola design
- 2 x SS Isotherm designer fridges w/ integrated freezer

Owner's Stateroom:

- 1 x Luxury mattress topper
- 2 x 12v outlets
- 2 x USB outlet charging outlets
- 2 x 110v outlets
- 1 x CD/DVD stereo w/ 2 Bose speakers
- 10 x LED spotlights in ceiling
- 2 x LED reading lights
- 4 x Concealed lights
- 2 x Removable chairs
- 4 x Storage
- 2 x Wardrobes

Heads: 1 Owner's cabin head, 1 shared day head (2x)

- 1 x SS + Glass custom made shower enclosure
- 1 x Stand up shower
- 1 x Jabsco designer toilet, 24v, w/macerator pump
- 1 x Sinks by Philippe Starck
- 2 x Mounted mirrors w integrated lights & med cabinet
- 1 x Towel warmer in polished chrome

Salon:

- 1 x Isotherm icemaker
- 1 x Isotherm chest freezer/fridge below galley sole
- 1 x Double adjustable captain's seats w/ Sunbrella fabrics
- 1 x Triple sofa with Sunbrella fabrics
- 1 x Foldable coffee table in teak
- 6 x Large sofa in salon w/ Sunbrella fabrics
- 1 x Salon table in teak
- 2 x 12v outlets
- 3 x 110v outlets
- 2 x USB outlets
- 1 x CD stereo with 4 Bose speakers
- 1 x Defroster outlet w/ hot air
- 12 x LED spotlights
- 1 x Sliding side door for Captain
- 8 x Cup holders
- 4 x Storage drawers in various sizes

Guest Cabins: (x2)

- 2 x 20 cm mattresses
- 2 x 7 cm luxury mattress topper
- 4 x Pillows
- 1 x 12v outlet
- 1 x CD stereo w/ 2 Bose speakers
- 1 x USB outlet
- 1 x 110v outlets
- 1 x Heater outlet
- 3 x LED spotlights
- 2 x LED reading lights
- 2 x Concealed LED-lights
- 2 x Wardrobes w/ hang & storage

Audio System: (various options available)

13x Bose multi-zone speakers (typical)

FOR MORE INFORMATION ABOUT THE 54 CARBON OR ANY OF THE DELTA POWERBOATS LINE,
 PLEASE CONTACT YOUR LOCAL FACTORY REPRESENTATIVE.

BY EMAIL: SALES@DELTAPOWERBOATS.US

BY PHONE: 305.439.5803 (CHAPMAN) | 772.532.3598 (IAN)

VISIT US ONLINE WWW.DELTACARBONYACHTS.COM

88 CARBON



delta

POWERBOATS

88 CARBON

SPECIFICATIONS:

Main characteristics

LOA: 84.4 ft.
 Hull Length: 78.15 ft.
 Beam: 21.72 ft.
 Draft: 5.64 ft.
 Clearance: 25.26 ft.

Displacements: 92,594 # dry
 99,208 # wet
 121,254 # total capacity

Fuel Capacity: 2 x 1,448 US gal
 Fresh Water Capacity: 317 US gal
 Holding Tank Capacity: 160 US gal

Top Speed: 38 knots
 Cruise Speed: 32-34 knots

CE Class: B
 Commercial Class: MCA with RINA compliance
 Design: Lars Modin

Construction: Lightcraft/Diab/Luksusjaht

Powerplants: 3 x Volvo Penta IPS 1200,
 900 HP each, 2,700 HP total

Stabilization: SeaKeeper M16000 zero-speed,
 gyroscopic stabilization system

Vetus iwinline
 Extraction fan
 4m3/min 141CFM
 Ø76mm
 Motor (6 ignition points)

HIGHLIGHTS:

FLYBRIDGE:

- 1 x Treben Italy captain's sofa, providing seating for captain plus four (2/1/2)
- Full remote helm: Volvo Penta gear/throttle unit, joystick, Autopilot control, 7" multi-display, 3 x touchscreen monitors, VHF, radar, windlass, interceptors, searchlight/FLIR, compass, GPS, and switch and alarm board.
- Various sofas, tables, cushions, and covers.
- Amenities including Electrohydraulic bimini top, Wetbar, refrigerator, grill, storage, sonance speaker system, Control4 zone, working lights, and courtesy lights.

MAIN STATION:

- 1 x Treben Italy captain's leather sofa
- Amenities including 1 x skylight, 2 x moonlights, remote controlled blinds Volvo Penta controls including joystick, multi-display, autopilot, Raymarine monitors, sounder, AIS, VHF, Engine room camera, surveillance cameras, radar, windlass controls, searchlight + FLIR, SeaKeeper, iPad, Audio controls, switchboard, fan controls, a/c controls + gauges for all systems

SALON:

- Amenities including various sofas, chairs, and tables, woodwork in select grade teak, 24 x Spotlights, Bar locker, Wine cooler for 20 wine bottles, Samsung 55" TV, custom audio/video system with Mac Mini, Apple TV, Control4, Sonance Audio, and TV elevator

GALLEY:

- Full galley inclusive of woodwork in select grade teak, oiled teak flooring, Corian tops, cooktop, speed oven, full-size fridge/freezer, dish washer, stainless steel double sink+ Vola faucet, extraction fan Nespresso, toaster, trash bins, lighting, etc
- 1 x set of custom-fitted stemware/glassware, dishware, cutlery and kitchen utilities

OWNER'S CABIN:

- Amenities including various sofas, chairs, and tables, woodwork in select grade teak, off-white Italian soft fabric, oiled teak flooring, Make up table/work desk, refrigerator, glass/wine cabinet, safe, 2 x Samsung 42" TVs w/"TV-elevator" WiFi, Mac Mini, Control4, private Raymarine station for vitals, etc

OWNER'S CABIN HEAD:

- Amenities including various sofas, chairs, and tables, woodwork in select grade teak, oiled teak flooring, Corian flooring, Glass mosaic, custom Corian dual sink with Vola fillers, Vola shower system, mood and makeup lights, custom shower enclosure, heated towel rack, and selectable opacity glass wall

GUEST CABINS AND HEADS:

- Amenities including various sofas, chairs, and tables, woodwork in select grade teak, roof panels in off-white Italian soft fabric, oiled teak flooring, 1 x Samsung 42" TV, 1 x Blu-Ray player, individual audio/video zones with access to Mac Mini via Apple TV, USB outlets, courtesy outlets, independent A/C zones, spotlights, reading lights, courtesy lights, and safety kits.

DAY HEAD:

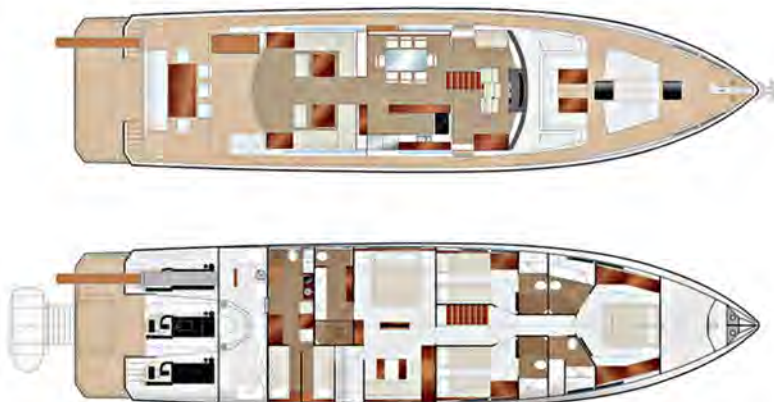
- Same as guest heads with addition of: washing machine, dryer, and iron with ironing board integrated

CREW CABIN AND HEAD:

- Same as guest accommodations (including woodwork and headliners, with the addition of: manual pantograph door, SS custom made staircase, Samsung 24" TV with independent A/V zone, Raymarine (repeater) display, fire alarm, refrigerator, and microwave

TENDER AND TENDER GARAGE:

- 1 x Williams 385 Tender with SS Slider system and HB Technik electrohydraulic winch and garage door with controls



FOR MORE INFORMATION ABOUT THE 88 CARBON OR ANY OF THE DELTA POWERBOATS LINE,
 PLEASE CONTACT YOUR LOCAL FACTORY REPRESENTATIVE.

BY EMAIL: SALES@DELTAPOWERBOATS.US

BY PHONE: 305.439.5803 (CHAPMAN) | 772.532.3598 (IAN)

VISIT US ONLINE WWW.DELTACARBONYACHTS.COM

DELTA

DELTA CARBON YACHTS | NEWS + CONTACT + SOCIAL



I WANT THIS DELTA

26 OPEN

33 OPEN

400

54 CARBON

88 CARBON

OTHER

SPECIAL REQUESTS FOR MY DELTA



PRICING, OPTIONS, AND NOTES FOR MY DELTA



FOR MORE INFORMATION ABOUT ANY OF THE DELTA POWERBOATS LINE, PLEASE CONTACT YOUR LOCAL FACTORY REPRESENTATIVE.

BY EMAIL: SALES@DELTAPOWERBOATS.US

BY PHONE: 1-844-DELTAPB
(1-844-335-8272)

VISIT US ONLINE: WWW.DELTACARBONYACHTS.COM

PHOTO CREDITS:
DELTA: DIRK, KALLE, PATTY, IAN
PERRIN JAMES, LASTBREATHFILM.COM



@DeltaCarbonYachts



@DeltaAmericas



/DeltaPowerboatsUS

WWW.DELTACARBONYACHTS.COM

#DELTALIFE